



## Find Questions & Instructions

We have introduced a tool that finds questions and instructions in documents and is included within the Document Analyzer. The results are accessible within the Analysis Results panel. It was designed so the search parameters are customizable, this provides the flexibility to narrow down the type of instructions you are seeking.

What this tool gives you is an easy visualization of found questions and instructions. You can quickly navigate to the associated parse segments/paragraphs by clicking on a question/instruction in the side panel.

Additionally, you can filter the parse segments/paragraphs and export filtered results to Excel, MS Word, and HTML files with your annotated notes. Exported Results files can effortlessly be shared by clicking on the email button that opens a new email in MS Outlook with the attached Exported Result file.

**Atebion Document Analyzer** - Document Analyzer, Copyright © 2016 -- Release 1.7.18.02 -- Expires in 172 Days.

Project: Test  
Doc: PAR-13-257 NICHD Program Project Grant P01

**Analysis Results** - Quantity of Segments: 27

Number	Caption	Keywords
0	Department of Health and Human Services	
1	Part 1. Overview Information	critical [1], may [1], must [2], require [2], will [2], is to [1], quality [1], r...
2	Section I. Funding Opportunity Description	
3	Purpose	may [5], must [11], require [1], should [11], will [3], expect [1], is to [1]...
4	1. Eligible Applicants	
5	Eligible Organizations	must [4], should [1], ensure [1]
6	eRA Commons accounts are necessary to u...	
7	All registrations must be completed by the ...	must [1]
8	For institutions/organizations proposing ...	may [1], require [1], should [4]
9	Number of Applications	may [1], must [1], will [1]
10	1. Requesting an Application Package	critical [1], may [1], must [6], require [11], should [15], will [17], qualif...
10-1	Note: The Project Performance Site form ...	may [6], must [26], needed [4], require [19], should [29], will [29], are ...
13	See more tips for avoiding common errors.	must [1], require [1], will [2], required [1]
14	1. Criteria	critical [1], may [1], will [7]

**Instructions/Questions Found**

- 13 See more tips for avoiding common errors. Applications that are incomplete will not be reviewed.
- 14 1. Criteria: Reviewers will provide an overall impact score to reflect their assessment of the likelihood for the Program Project exert a sustained, powerful influence on the research field(s) involved, in consideration of the following review criteria and additional review criteria (as applicable for the Program Project proposed).
- 14 1. Criteria: Does the Program Project address an important problem or a critical barrier to progress in the field?
- 14 1. Criteria: If the aims of the Program Project are achieved, how will scientific knowledge, technical capability, and/or clinical practice be improved?
- 14 1. Criteria: How will successful completion of the aims change the concepts, methods, technologies, treatments, services, or preventative interventions that drive this field?
- 14 1. Criteria: Are the PD(s)/PI(s), collaborators, and other researchers well suited to the Program Project?
- 14 1. Criteria:

**Selected Segment**

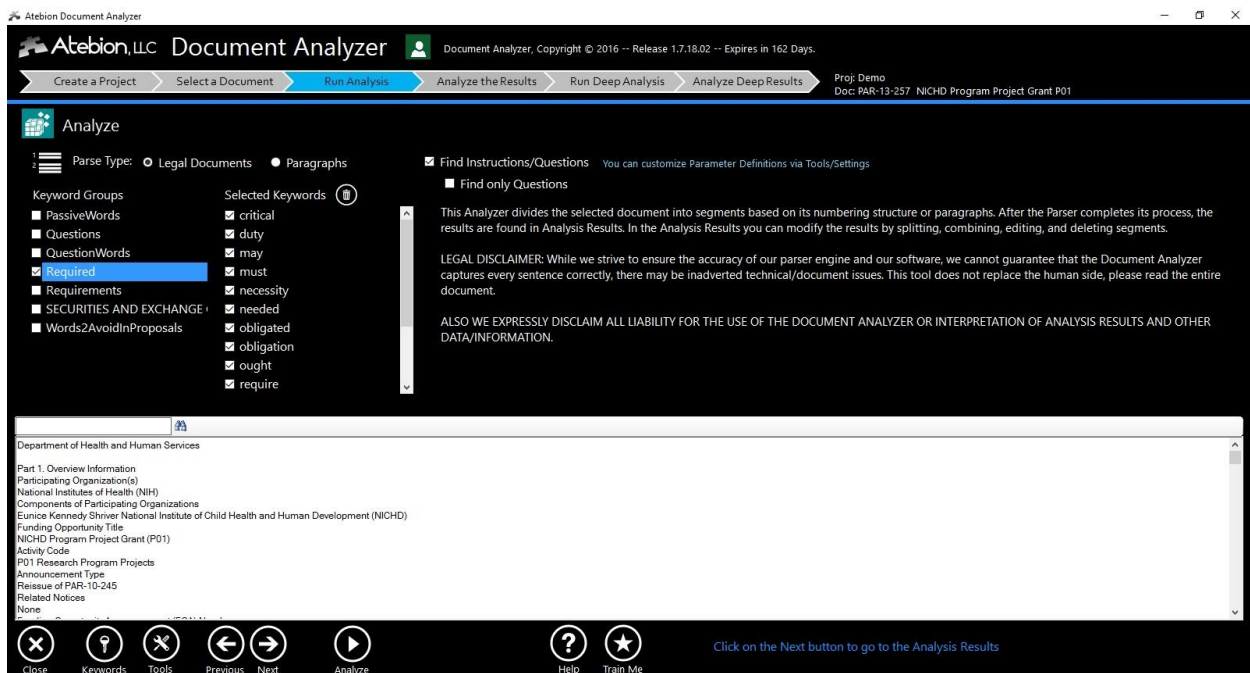
See more tips for avoiding common errors.  
Upon receipt, applications will be evaluated for completeness by the Center for Scientific Review. NIH. Applications that are incomplete will not be reviewed.  
Requests of \$500,000 or more for direct costs in any year  
Applicants requesting \$500,000 or more in direct costs in any year (excluding consortium F&A) must contact NIH program staff at least 12 weeks before submitting the application and follow the Policy on the Acceptance for Review of Unsolicited Applications that Request \$500,000 or More in Direct Costs as described in the SF424 (R&R) Application Guide, Post-Submission Materials  
Applicants are required to follow the instructions for post-submission materials, as described in NOT-OD-10-115.  
Section V. Application Review Information

Close, Keywords, Tools, Previous, Next, Help, Train Me

Click on the Help button to learn about features on this panel

The Document Analyzer reads various file types, PDFs, MS Word documents (doc & docx), Rich Text Format (RTF) and Plain Text (txt). We suggest using this feature for Request for Proposals (RFPs) and Grant Requests where questions and instructions are present.

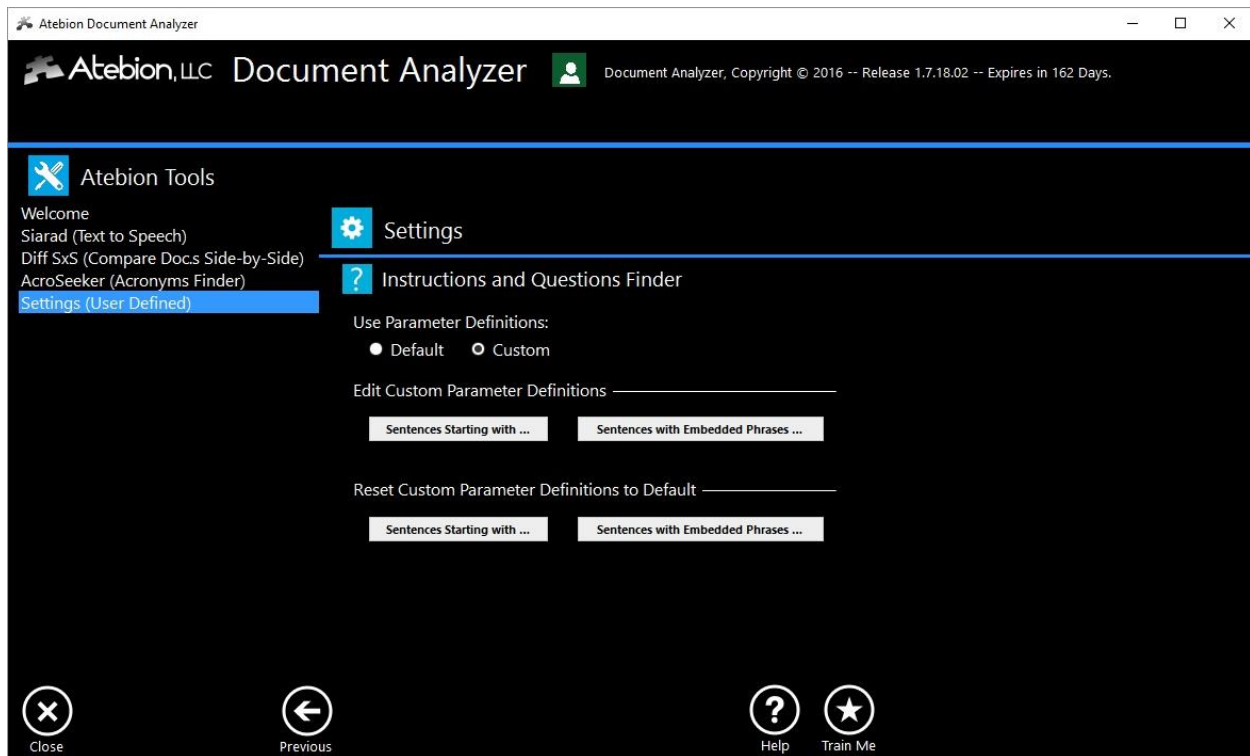
You are given the option to identify Questions & Instructions from the Analyze panel during the parsing/shredding (analyze) process. Also you have the option to find only Questions.



## Customize Instruction Search Parameters

You can determine if you want to use the Default parameters (from Atebion LLC) or your Customize parameters.

There are two parameter types "Sentences Starting with ..." and "Sentences with Embedded Phrases".



The Find Questions & Instructions tool is part of the Document Analyzer package. The Document Analyzer is the best value on the market and is so easy to use that training is typically not needed.

Go to our website <http://www.atebionllc.com/> , download the Document Analyzer (click on the blue "Type Document Analyzer" button) and run the downloaded installation file. You can try the Document Analyzer at no cost and no credit card is required.